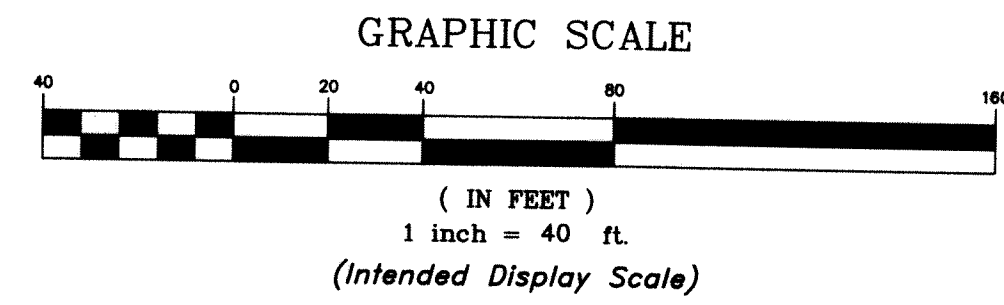
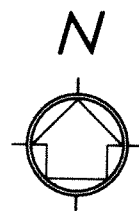


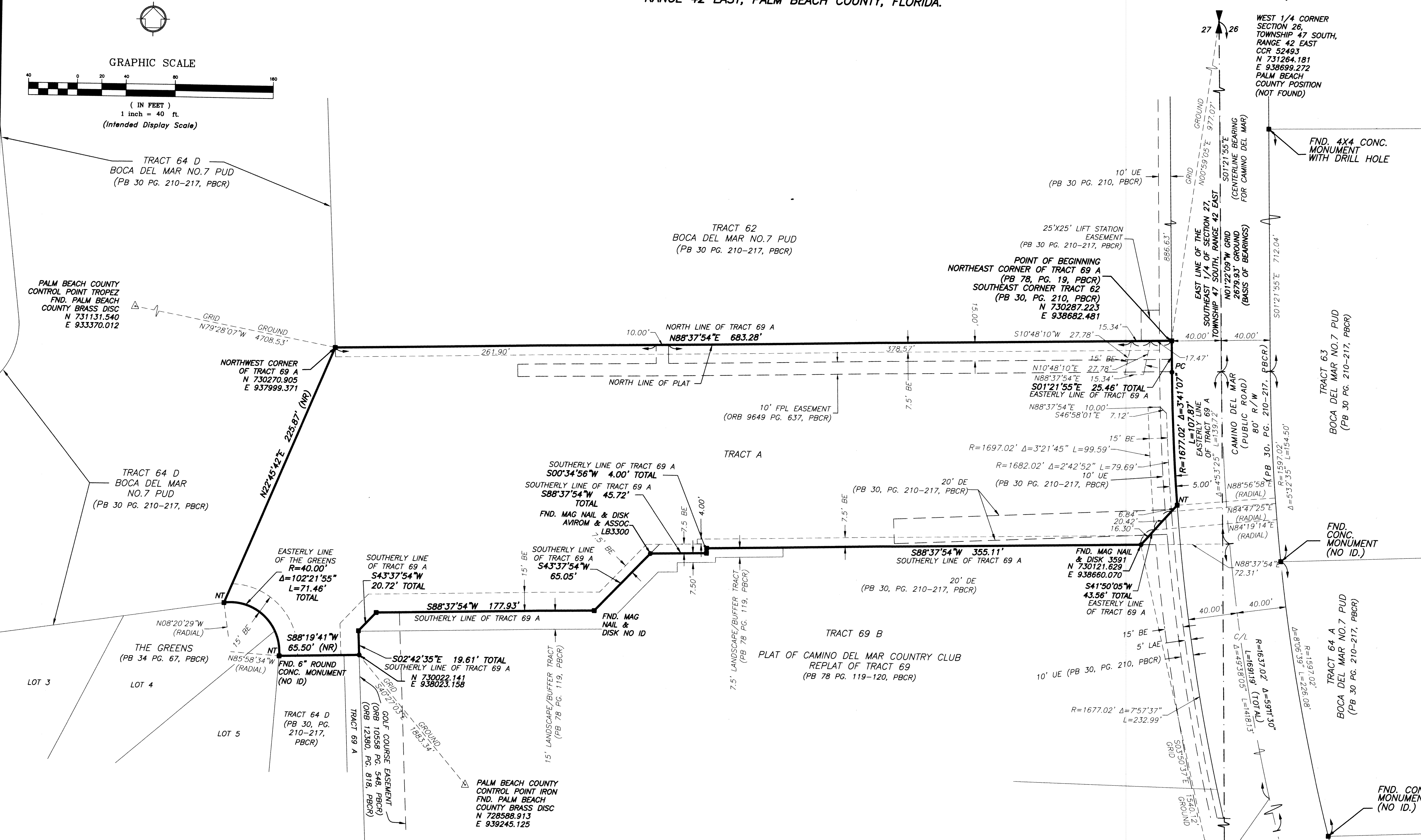
BOCA DEL MAR PUD - VILLAGE CENTER AT MIZNER VILLAGE

BEING A REPLAT OF A PORTION OF TRACT 69 A AND THE LANDSCAPE AND BUFFER TRACT, CAMINO DEL MAR COUNTRY CLUB, ACCORDING TO A PLAT THEREOF AS RECORDED PLAT BOOK 78, AT PAGE 119, TOGETHER WITH A PORTION OF TRACT 64 D, BOCA DEL MAR NO. 7 PUD, ACCORDING TO THE PLAT THEREOF AS RECORDED PLAT BOOK 30, AT PAGE 210, BOTH BEING OF THE PUBLIC RECORDS, PALM BEACH COUNTY, FLORIDA. LYING AND SITUATE IN SECTION 27, TOWNSHIP 47 SOUTH, RANGE 42 EAST, PALM BEACH COUNTY, FLORIDA.

176



SHEET 2 OF 2 SHEETS



LEGEND

- | | | | |
|-------|-----------------------------|------|---|
| BE | = Buffer | PG. | = Page |
| C/L | = Center Line | PB | = Plat Book |
| CCR | = Certified Corner Record | PRM | = Permanent Reference Monument |
| CONC. | = Concrete | PUD | = Planned Unit Development |
| CB | = Cord Bearing | PC | = Point of Curvature |
| CD | = Cord Distance | R | = Radius |
| Δ | = Delta (Central Angle) | R/W | = Right-of-Way |
| DE | = Drainage Easement | R/PB | = Road Plat Book |
| FPL | = Florida Power & Light | UE | = Utility Easement |
| FND. | = Found | ■ | = Set 4" X 4" Concrete (PRM) W/Aluminum Disc Stamped "LB 7055 PRM" Unless Otherwise Noted |
| L | = Length of Arc | ● | = Set Nail & Brass Disc Stamped "LB 7055 PRM" Unless Otherwise Noted |
| LAE | = Limited Access Easement | | |
| LB | = Licensed Business | | |
| NAD | = North American Datum | | |
| NO. | = Number | | |
| NT | = Non Tangent | | |
| ORB | = Official Records Book | | |
| PBCR | = Palm Beach County Records | | |

NOTE:

COORDINATES SHOWN ARE GRID COORDINATES
 DATUM - NAD 83 (1990 ADJUSTMENT)
 STATE PLANE FLORIDA EAST ZONE
 TRANSVERSE MERCATOR PROJECTION
 LINEAR UNIT = U.S. SURVEY FEET
 ALL DISTANCES ARE GROUND
 SCALE FACTOR = 1.000032176
 PLAT BEARING = GRID BEARING
 GROUND DISTANCE X SCALE FACTOR = GRID DISTANCE



2035 Vista Parkway, West Palm Beach, FL 33411
 Phone No. 866.909.2220 www.wginc.com
 Cert No. 6091 - LB No. 7055

THIS INSTRUMENT WAS PREPARED BY KELSEY M. SMITH, P.S.M., PROFESSIONAL SURVEYOR AND MAPPER, LICENSE NO. 7096 FOR THE FIRM: WGI, INC.